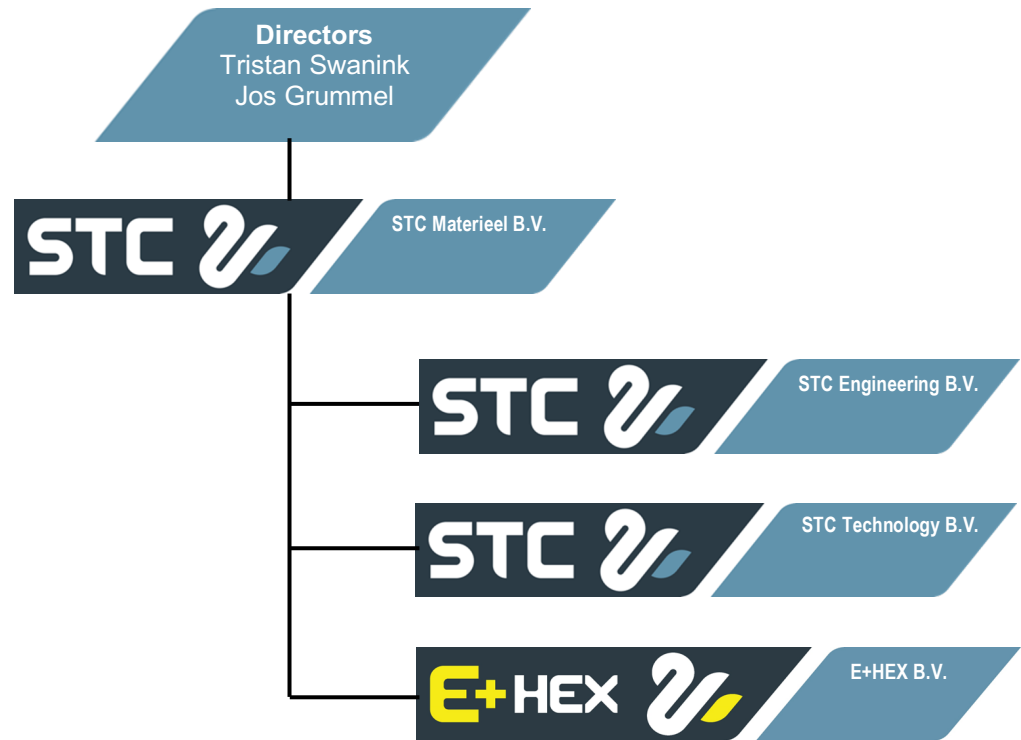






The world is constantly changing all around us and sustainable solutions are desired in the changing market of heavy machinery/ construction equipment.

E+HEX originated from STC BV and the growing need within this for sustainable alternative drives for the demolition/excavators it develops. As E+HEX we want to become a reliable partner for our clients and provide them with a reliable and sustainable machine that can power them for the future in a people and planet friendly way.



STC has more than 30 years of experience in designing and building heavy machinery / construction equipment and is therefore a solid base for E+HEX.



## Future Proof

Instant power and enough of it, these things will make your tasks easier to complete. We as E+HEX convert existing diesel engine machines to a fully electric driven one. We focus on cable driven machines that can power our clients 24/7 and help them reduce their carbon footprint and become more sustainable.

### Comfort

Our converted machines don't sacrifice the comfort you know and love from the base machine. Comfort is very important to have with a full shift ahead

### 24/7 availability

Our converted machines are cable driven which means it's always powered on and you never have to think about the time you have left before the refill like with the normal diesel engines.



### Zero emission

Our converted machine is completely emission free, which means that people can work in a healthier environment and this contributes to a better future.

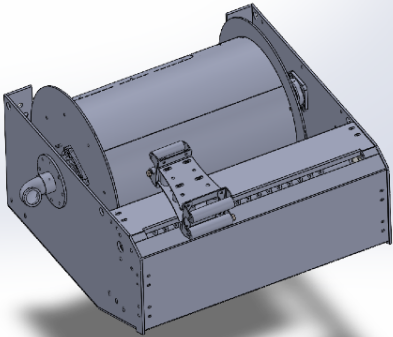
### Less maintenance

The electric engines are more reliable and don't need a long check before you can start working. This means more time to work on the project.

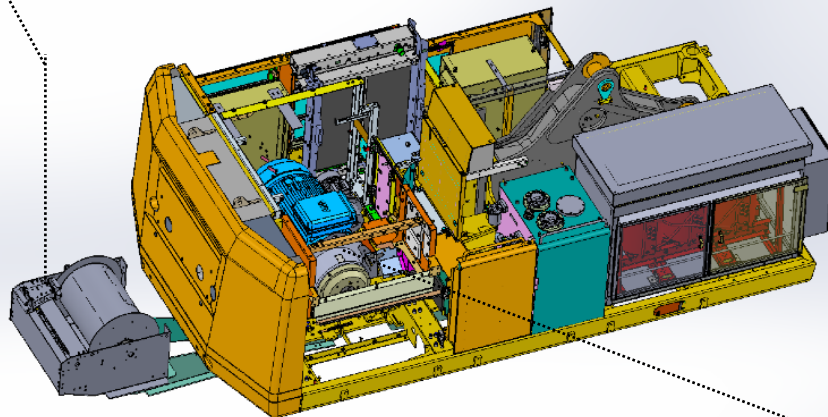
### Strong and ready

Our machines are fully electric which means that you have instant power on the job. You will have full battery capacity available so even the harder tasks will get easier to do.





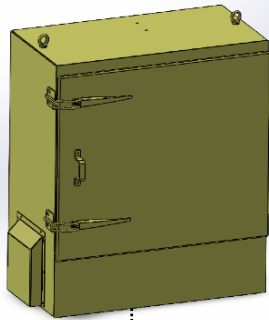
E+HEX is currently focusing on cable driven machines supplied with a cable drum on the back of the machine. With this cable drum our clients don't have to worry that there are any loose power cables within the drive area of the machine. Cable length can be made client specific. (see technical detail data sheet)



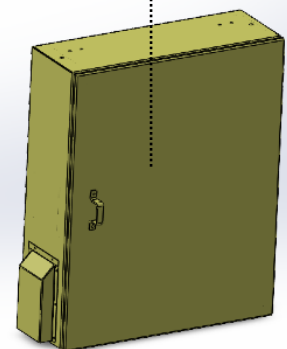
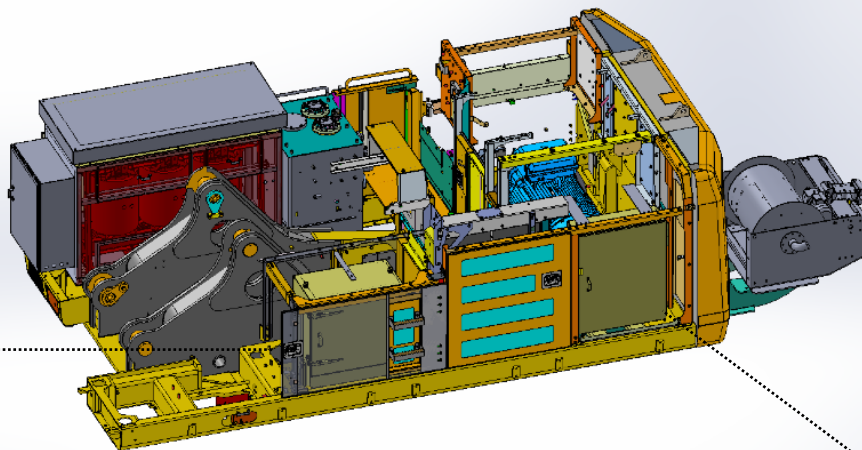
The drive line will consist of a fluid cooled electric motor controlled by a frequency controller for a soft start and the possibility to move the machine on a lower current for transport.

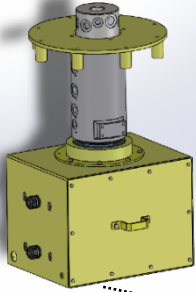
The electric motor can run up to 1800 rpm and will be connected to the original flywheel housing.

Due to the frequency controller and electric motor, we have the possibility to fine tune the torque and rpm settings to the different power modes.

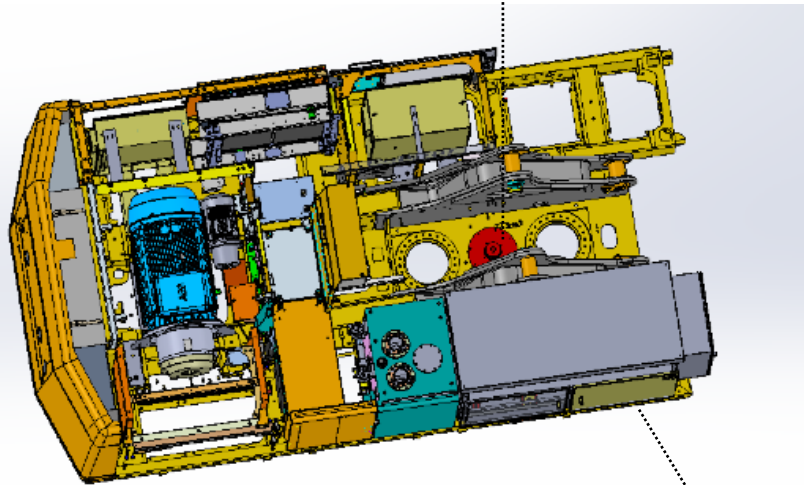


The machine will be equipped with electrical cabinets that are resistant to the working environment.

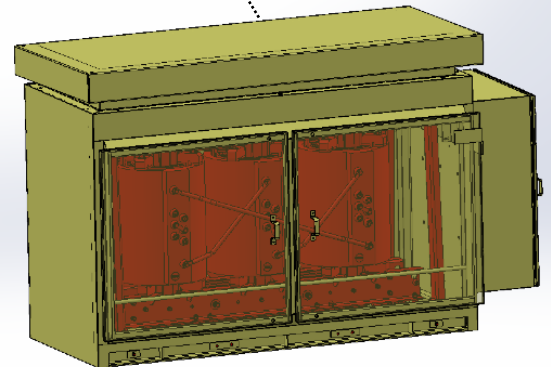


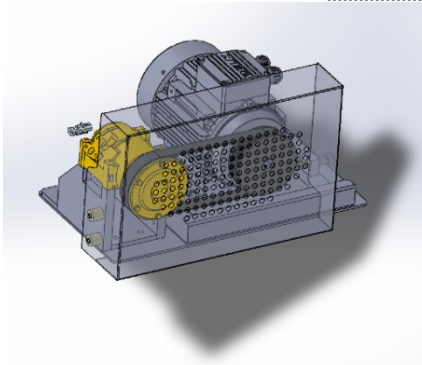


Electric/ hydraulic swivel



Cabinet for AC/DC transformers

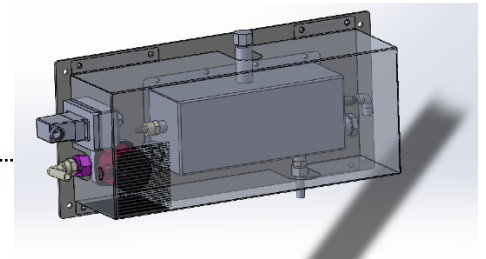
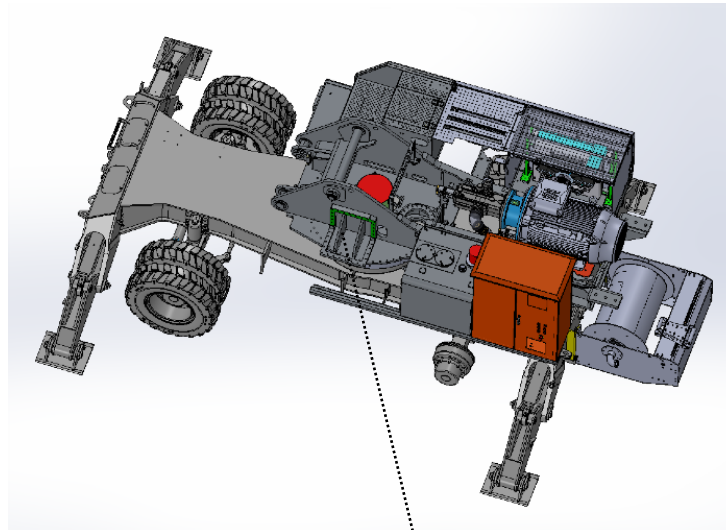




**Airconditioning supply**



**Main electrical pump**



**Cabin heating**





## Quality is the key.

To guarantee the best quality, we only work with premium suppliers who all have years of experience in converting diesel engines to electrically powered machines.

## For people and planet!

The well-being of people and the climate is paramount within E+HEX and this well-being goes well with our alternative drives for the machines. Working with electrically powered machines has several advantages. In this way, work can be done in various places without noise nuisance from the heavy diesel engines. The electric drivetrain itself is very quiet and as a result, the only noise comes from the work being done. Furthermore, there are no CO<sub>2</sub> emissions, which makes the air around the machines a lot more pleasant to breathe for the employees and people near the construction site.

In addition to the fact that electrically powered machines are better for the environment, they are also increasingly desired by the government. It is not only the CO<sub>2</sub> emissions that are drastically reduced but also the noise pollution is a lot less. Many governments also prefer that construction companies work with electrically powered machines in city centers. With an electrically driven machine, you can distinguish yourself from other companies and you are prepared for the future.

Commissioning an electrically powered machine is also socially responsible and this is supported by various governments because with such a machine you can take people, the environment and society into account.

**CAT 352**

Total length of cable from transformer including drum

S mm <sup>2</sup> (Cable Section Area)	VOLTAGE	Motor kW	200 m	400 m	600 m	700 m	800 m	900 m	1.000 m	1.100 m	1.300 m	1.400 m	SPECIAL CABLE FOR DRUM	MAX. CABLE LENGTH. FOR CABLE DRUM
3 x 120 mm <sup>2</sup>	400	280	1,74	3,47	5,21	6,08	6,94	7,81	8,68	9,55	11,28	12,15	3X(3X120+3X25G)	NOT APPLICABLE
2 x 95 mm <sup>2</sup>	700	280	1,07	2,15	3,22	3,76	4,30	4,83	5,37	5,91	6,98	7,52	2X(3X95+3X15G)	2 x 60m = 60 total
1 x 120 mm <sup>2</sup>	1.000	280	0,83	1,67	2,50	2,92	3,33	3,75	4,17	4,58	5,42	5,83	3X120+3X25G	100m

ACCEPTABLE VOLTAGE DROP MAXIMUM %

**CAT 374**

Total length of cable from transformer including drum

S mm <sup>2</sup> (Cable Section Area)	VOLTAGE	Motor kW	200 m	400 m	600 m	700 m	800 m	900 m	1.000 m	1.100 m	1.300 m	1.400 m	SPECIAL CABLE FOR DRUM	MAX. CABLE LENGTH. FOR CABLE DRUM
3 x 120 mm <sup>2</sup>	400	315	1,95	3,91	5,86	6,84	7,81	8,79	9,77	10,74	12,70	13,67	3X(3X120+3X25G)	NOT APPLICABLE
2 x 95 mm <sup>2</sup>	700	315	1,21	2,42	3,63	4,23	4,83	5,44	6,04	6,65	7,85	8,46	2X(3X95+3X15G)	2 x 60m = 60 total
1 x 120 mm <sup>2</sup>	1.000	315	0,94	1,88	2,81	3,28	3,75	4,22	4,69	5,16	6,09	6,56	3X120+3X25G	100m

ACCEPTABLE VOLTAGE DROP MAXIMUM %

**CAT 395**

Total length of cable from transformer including drum

S mm <sup>2</sup> (Cable Section Area)	VOLTAGE	Motor kW	200 m	400 m	600 m	700 m	800 m	900 m	1.000 m	1.100 m	1.300 m	1.400 m	SPECIAL CABLE FOR DRUM	MAX. CABLE LENGTH. FOR CABLE DRUM
3 x 120 mm <sup>2</sup>	400	355	2,20	4,40	6,60	7,70	8,80	9,91	11,01	12,11	14,31	15,41	3X(3X120+3X25G)	NOT APPLICABLE
2 x 95 mm <sup>2</sup>	700	355	1,36	2,72	4,09	4,77	5,45	6,13	6,81	7,49	8,85	9,53	2X(3X95+3X15G)	2 x 60m = 60 total
1 x 120 mm <sup>2</sup>	1.000	355	1,06	2,11	3,17	3,70	4,23	4,75	5,28	5,81	6,87	7,40	3X120+3X25G	100m

ACCEPTABLE VOLTAGE DROP MAXIMUM %

**Note:** When working on 400V we can not mount a cable drum on the machine due to not being able to roll up the multiple cables at the same time.



E+hex BV  
Vosmatenweg 3  
7742SX Coevorden  
The Netherlands  
+31 524 525 375  
[www.ehex.nl](http://www.ehex.nl)